

DV6000 VIDEO TRANSPORT**DV6000 Product Family Overview****Features:****TDM Architecture**

Dozens of video/audio/data services per optical wavelength

Broad Selection of Common Interface Cards

- Analog Video (NTSC, PAL)
- Digital Video (SDI, HD-SDI, DVB-ASI, ATSC)
- QAM/IF/VSB
- Analog Audio, BTSC Audio
- 10/100 Base-T, DS3, T1, RS-232

Space Efficient Deployment

- One, eight, and 16-slot chassis options

Optical Multiplexing

- WDM, CWDM, DWDM allows hundreds of services per fiber

Protected Networks

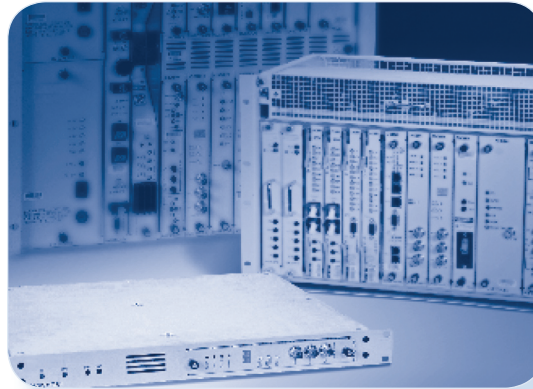
- No Fiber path failures
- No Loss of centralized video distribution source

Supported Technologies

- Point to point
- Linear
- Rings
- Cross-connected rings
- Single and multi-channel tributaries
- Repeaters

Full Fidelity Transport

- Video and audio transported without added compression
- Virtually zero latency



The DV6000 Digital Transport System is a high performance, broadcast quality video, audio and data transport system. Utilizing Time Division Multiplexer (TDM) architecture the DV6000 can transport dozens of video and data circuits over a single fiber channel. It is an ideal solution for large video networks requiring protected or redundant circuits, drop/add/pass capabilities as well as point-to-point applications. DV6000's TDM architecture uses no compression techniques to assure the highest possible video quality with virtually zero latency.

DV6000 is one of the most widely used video transport systems in the world deployed by Cable TV operators, telecommunication companies, video service providers and private video networks. In addition to transporting video and audio the DV6000 family can be used to transport data traffic such as RS232, DS3, 10/100 BaseT and T1.

The DV6000 Product Family

The DV6000 System consists of the following sub-systems:

- DV6016 Multi-Channel Transmission and Switching
- DV6400 Interface Gateway and Tributary Access
- DV6300 Single Channel Transmission and Tributary Access

Applications:

- Remote video collection/backhaul
- Contribution quality video transport
- CATV backbones
- Broadcaster interconnection
- Surveillance networks
- Interactive distance learning

DV6000 Product Family Recent Enhancements

As video, optical and digital technology progress, so has the DV6000 Product Family. With new video, data, and voice service interfaces, improved optical performance, and a new controller which greatly expands its networking capabilities the DV6000 Product Family will remain in front of the technology curve for years to come.

DAP4 Combined Optics & Controller



The DAP4 Combined Optics and Controller for the DV6000 Universal Digital Transport System functions as a DV6000 Equipment Shelf controller as well as a housing for up to two new compact optical transceiver modules. With enhanced functionality such as an internal 64 x 64 timeslot interchange and new network protection capabilities, the DAP4 Combined Optics and Controller

provides unmatched architecture flexibility for both new and existing DV6000 networks.

- Backwards compatible with existing DV6000 networks
- Provides new UPSR style network protection mode
- Enables ring closing and full redundant optical repeating within DV6000 equipment shelf
- Contains 64 x 64 timeslot interchange for channel aggregation or ring interconnection
- Dual hot-swappable 2.38Gbps transceivers plug directly into main control module
- Built-in self-test (BIST) mode and an embedded test encoder/decoder
- Provides a menu driven interface (MDI) for setup and control accessed via a terminal connection
- Remote monitoring and day-to-day control via IMI-9000 (Information & Monitoring Interface)

HD-SDI/SDI/DVB-ASI Transport and Tributary Modules

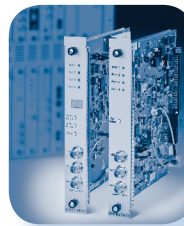


Artel's new Digital Video Transport & Tributary Module set expands the DV6000 Product Family's capability to include point-to-point transport of HD-SDI, SDI, SDTI, and DVB-ASI

in a 1RU chassis. Additionally, tributary transport into and out of DV6000 networks of SDI, SDTI, and DVB-ASI is now available. These modules create both a cost-effective solution for new channel rollouts, and a simplified method for migrating existing analog video circuits into digital video circuits.

- Transparent Point-to-Point Transport, in 1RU or Single Slot, of:
 - HD-SDI (SMPTE 292M) @ 1.485Gb/s
 - SDI (SMPTE 259M) @ 270 Mbps
 - SDTI (SMPTE 305M) @ 270 Mbps
 - DVB-ASI @ 270 Mbps
- Tributary Access between DV6300 and DV6000 for:
 - SDI (SMPTE 259M) @ 270 Mbps
 - SDTI (SMPTE 305M) @ 270 Mbps
 - DVB-ASI @ 270 Mbps
- Tributary Transmitter and Tributary Receiver interoperate with existing combination SDI or DVB-ASI encoders and decoders
- Flexible industry standard SFP Optics

Multi-Port DVB-ASI and SMPTE 310 Modules



Artel's Multi-Port DVB-ASI & SMPTE 310M Interface cards enable up to three DVB-ASI signals and one SMPTE 310M signal to be transported in one timeslot of any DV6000 Product Family System (DV6000, DV6400, DV6300).

- Three available DVB-ASI ports and one SMPTE 310M port per single slot card
- Transports an aggregate of 126Mbps of MPEG-2 data using only one DV timeslot
- User-selectable individual port bandwidths (10.5Mbps increments)
- Plugs into 1RU DV6300 equipment shelves (for CPE sites where space is a premium) as well as into the DV6000, DV6408, and DV6444 equipment shelves
- Easy front panel push buttons and digital display allow for encoder port configuration without the use of software; decoder port configuration is fully automatic
- Native BNC connectors for all ports located on either the card front panels or equipment shelf rear panel

